

MultiTV MDVB-S 9800 System software update instruction

Please Do read this instruction carefully before you starting update software

Software: You can find following files in Folder  MDVB-S9800 software



- 1、 YINHE-H20M-dvbs-MultiTV-MDVB-S9800-pvr-HW0X2A32-8.mdl is the new software for mdvb-s9800
- 2、 Stb-V4 is the tool for upgrading MDVB-S9800's system software

Hard ware: the hard wares you need are as follows;

- 1、 A computer with RS-232 serial port.
- 2、 A RS-232 serial port program upgrade cable (picture 1)



You may find this cable in carton number 18.

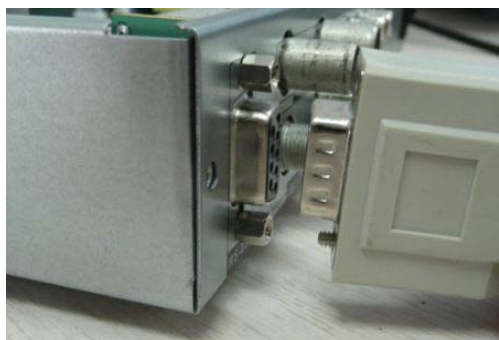
(picture 1)

MDVB-S9800 System software upgrade steps:

Step 1: Connect MDVB-S9800 to computer by RS-232 serial port program upgrade cable (picture2, picture3)

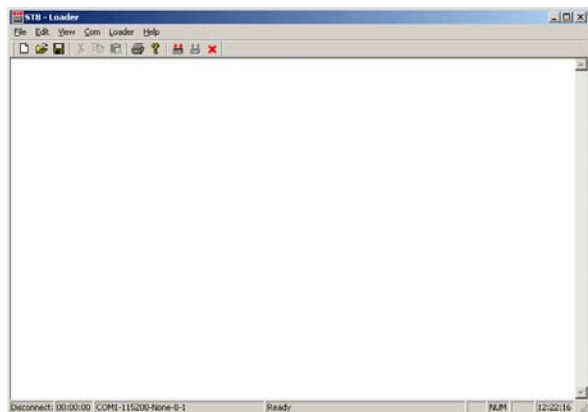


picture2



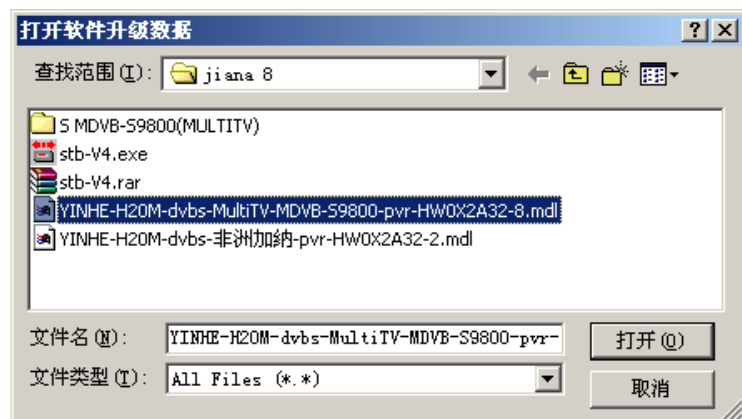
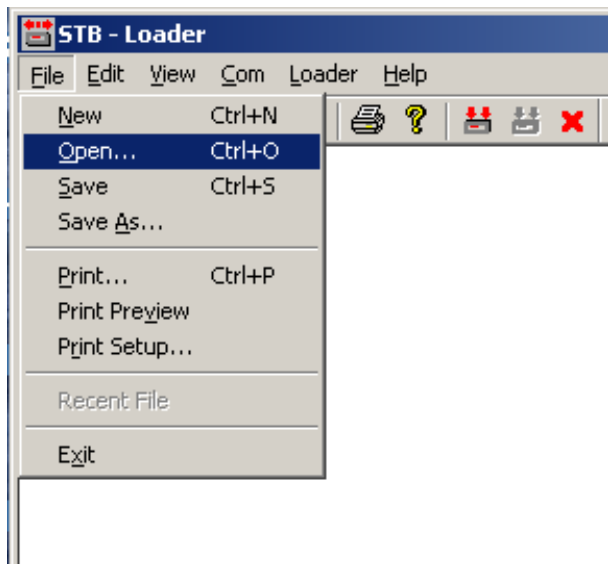
picture3

Step 2: Run stb-v4.exe on your computer, you will see picture 4

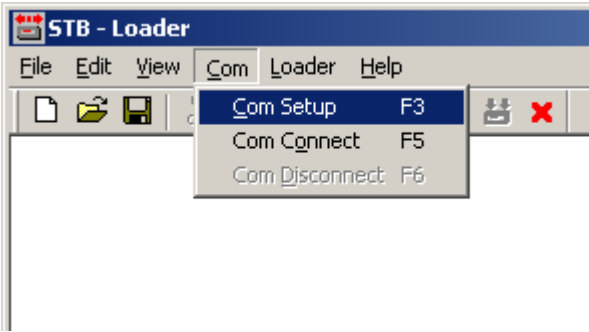


picture 4

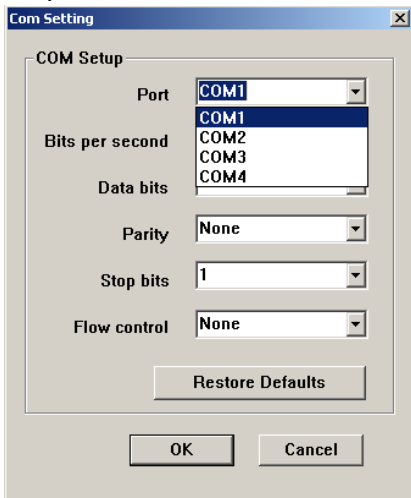
Step 3: Open new software YINHE-H20M-dvbs-MultiTV-MDVB-S9800-pvr-HW0X2A32-8.mdl



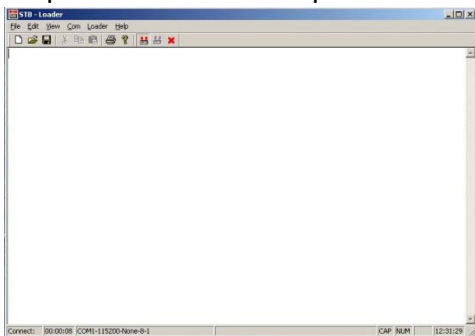
Step 4: Com Setting (Com1 is the default setting of this tool, if you use other Com, you can change it like this)



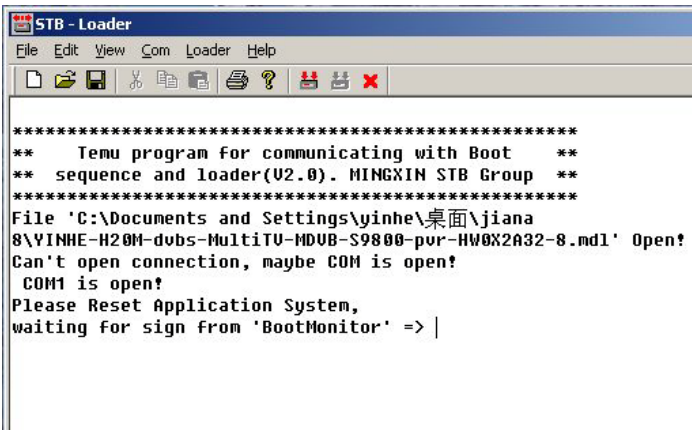
Step 5: Select COM1 and then click OK for example



Step 6: STB-Loader setup finished



Step 7: Click , you will see

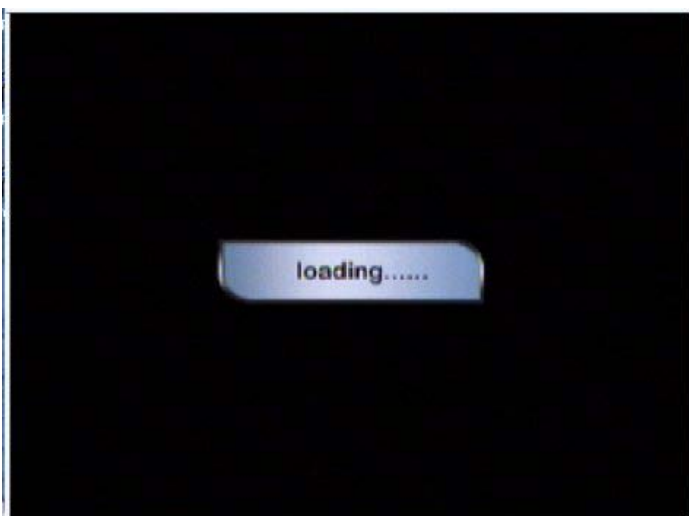


Step 8: Switch on MDVB-S9800(Do not switch on MDVB-S9800 before , do not switch off MDVB-S9800 until it restart automatically), you will see following screen.



It will take about 4 minutes to upgrade MDVB-S9800's system software.

Step 9: MDVB-S9800 restart automatically, System software upgrade completed!



To upgrade other MDVB-S9800S' System software, please start from Step 7.